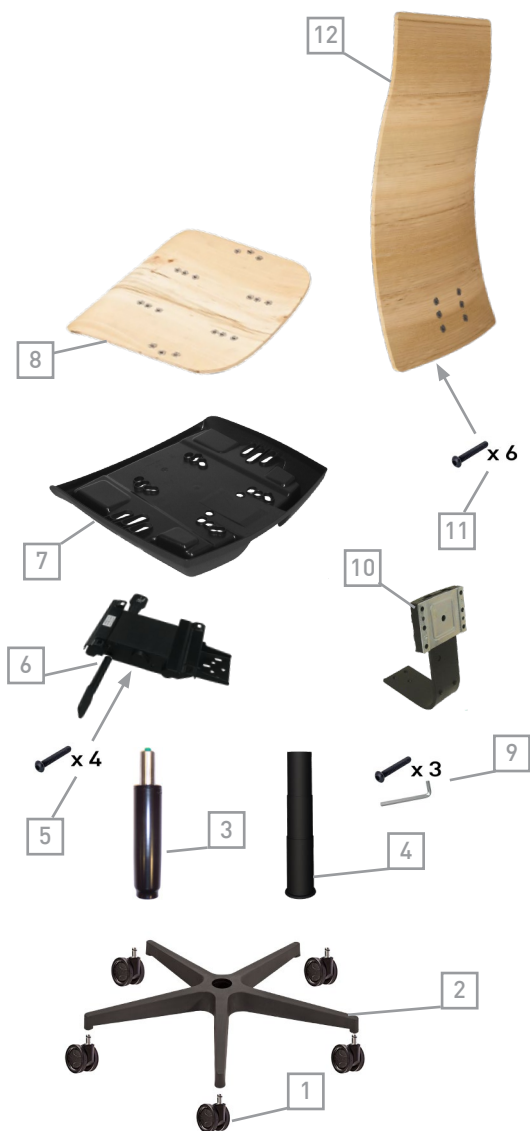


DARK



DARK high backrest

Sincro/Synchro



Codice/Code	Descrizione/Description
1. RWL010201	Ruota Work libera Ø65mm, perno Ø11mm, nera Work castor Ø65mm, push fit stem Ø11mm, black
2. B250201	Base B25 Ø700 perno Ø11 nera Base B25 Ø700 stem Ø11 black
3. P0201	Pompa a gas H.200/97, conifica H.15, nera Gas column H.200/97, lower gas cone H.15, black
4. SFT1301	Soffietto telescopico 3 stadi 295mm, nero Telescopic bellow 3 stages 295mm, black
5. 0605	Viti TBEI M6 x 25 T.Ø13 (con blocca filetto), brunite Screws BHCS M6 x 25 H.Ø13 (with thread lock), burnished
6. PP4001	Meccanismo sincro, autopesante a 4 posizioni, nero Synchro mechanism, weight activated with 4 positions, black
7. SS0701	Sottosedile art. 07 nero Outer seat art. 07 black
8. SD071801FE	Sedile interno art. 07 a 18 borchie e con barre in ferro, nero Inner seat art. 07 with 18 nuts and inner steel bars, black
9. KIT13062	Kit viti M8 x 20 TBEI + Chiave esagoale Screw kit M8 x 20 IHHEC + Hexagon key
10. LM0801	Lama reggischienale art. 08 con movimento Up&Down, nera Backrest support art. 08 with Up&Down system, black
11. 0609	Viti TBEI M6 x 30 T.Ø13 (con blocca filetto), brunite Screws BHCS M6 x 30 H.Ø13 (with thread lock), burnished
12. SCL17ALT	Schienale interno alto in legno art. 17, 460x800 mm High inner wooden backrest art. 17, 460x800 mm

*Accessori/Optional:

13. B250218	Base B25 in alluminio lucido Ø700mm, perno Ø11mm Polished aluminium base B25 Ø700mm, stem Ø11mm
14. P0418	Pompa a gas H.220/110, conf. H.40 cromata Gas column H.220/110, gas cone H.40 chromed
15. RWL020201	Ruota Work libera gommata Ø65mm, perno Ø11mm, nera Work soft castor Ø65mm, push fit stem Ø11mm, black
16. BR28DX-SX01	Bracciolo regolabile art. 28, destro+sinistro nero Adjustable armrest art.28, right+left, black
17. BR60DX-SXLG	Bracciolo fisso in legno e lama in metallo art. 60, destro+sinistro Fixed wood armrest with metal support art. 60, right+left
18. KIT13008	Kit viti M6 x 36 TBEI, brunite + Chiave esagonale per fissaggio braccioli Screw kit M6 x 36 IHHEC, burnished + Hexagon key for armrest fixing
19. PP4001TRS	Meccanismo sincro con traslatore, autopesante 4 posizioni, nero Synchro mechanism with seat slider, weight act. with positions, black
20. GMSDI07	Cuscino sedile in PU schiumato a freddo D.65 SP.35mm PU cold foamed cushion for inner seat D.65 TH.35mm

N.B.: altri braccioli e meccanismi sincro a scelta nel catalogo generale

N.B.: other armrests and synchro mechanisms are available on our general catalogue

DARK medium backrest

Sincro/Synchro



Codice/Code	Descrizione/Description
1. RWL010201	Ruota Work libera Ø65mm, perno Ø11mm, nera Work castor Ø65mm, push fit stem Ø11mm, black
2. B250201	Base B25 Ø700 perno Ø11 nera Base B25 Ø700 stem Ø11 black
3. P0201	Pompa a gas H.200/97, conifica H.15, nera Gas column H.200/97, lower gas cone H.15, black
4. SFT1301	Soffietto telescopico 3 stadi 295mm, nero Telescopic bellow 3 stages 295mm, black
5. 0605	Viti TBEI M6 x 25 T.Ø13 (con blocca filetto), brunite Screws BHCS M6 x 25 H.Ø13 (with thread lock), burnished
6. PP4001	Meccanismo sincro, autopesante a 4 posizioni, nero Synchro mechanism, weight activated with 4 positions, black
7. SS0701	Sottosedile art. 07 nero Outer seat art. 07 black
8. SD071801FE	Sedile interno art. 07 a 18 borchie e con barre in ferro, nero Inner seat art. 07 with 18 nuts and inner steel bars, black
9. KIT13062	Kit viti M8 x 20 TBEI + Chiave esagoale Screw kit M8 x 20 IHHEC + Hexagon key
10. LM0801	Lama reggischienale art. 08 con movimento Up&Down, nera Backrest support art. 08 with Up&Down system, black
11. 0609	Viti TBEI M6 x 30 T.Ø13 (con blocca filetto), brunite Screws BHCS M6 x 30 H.Ø13 (with thread lock), burnished
12. SCL17MED	Schienale interno medio in legno art. 17, 460x600 mm Medium inner wooden backrest art. 17, 460x600 mm

*Accessori/Optional:

13. B250218	Base B25 in alluminio lucido Ø700mm, perno Ø11mm Polished aluminium base B25 Ø700mm, stem Ø11mm
14. P0418	Pompa a gas H.220/110, conf. H.40 cromata Gas column H.220/110, gas cone H.40 chromed
15. RWL020201	Ruota Work libera gommata Ø65mm, perno Ø11mm, nera Work soft castor Ø65mm, push fit stem Ø11mm, black
16. BR28DX-SX01	Bracciolo regolabile art. 28, destro+sinistro nero Adjustable armrest art.28, right+left, black
17. BR60DX-SXLG	Bracciolo fisso in legno e lama in metallo art. 60, destro+sinistro Fixed wood armrest with metal support art. 60, right+left
18. KIT13008	Kit viti M6 x 36 TBEI, brunite + Chiave esagonale per fissaggio braccioli Screw kit M6 x 36 IHHEC, burnished + Hexagon key for armrest fixing
19. PP4001TRS	Meccanismo sincro con traslatore, autopesante 4 posizioni, nero Synchro mechanism with seat slider, weight act. with positions, black
20. GMSDI07	Cuscino sedile in PU schiumato a freddo D.65 SP.35mm PU cold foamed cushion for inner seat D.65 TH.35mm

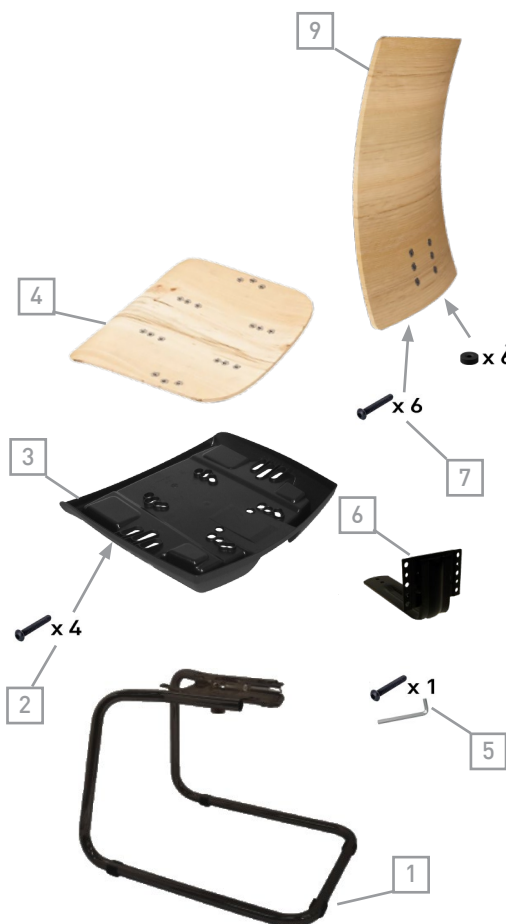
N.B.: altri braccioli e meccanismi sincro a scelta nel catalogo generale

N.B.: other armrests and synchro mechanisms are available on our general catalogue



DARK medium backrest

Slitta/Cantilever



Codice/Code	Descrizione/Description
1. GS0101	Slitta sedia, nera Cantilever, black
2. 0605	Viti TBEI M6 x 25 T.Ø13 (con blocca filetto), brunate Screws BHCS M6 x 25 H.Ø13 (with thread lock), burnished
3. SS0701	Sottosedile art. 07 nero Outer seat art. 07 black
4. SD071801FE	Sedile interno art. 07 a 18 borchie e con barre in ferro, nero Inner seat art. 07 with 18 nuts and inner steel bars, black
5. KIT15012	Kit vite M8 x 25 TBEI + Chiave esagoale Screw kit M8 x 25 IHHEC + Hexagon key
6. LM0701	Lama reggischienale art. 07 (fissa), nera Backrest support art. 07 (fixed), black
7. 0602	Viti TBEI M6 x 20 T.Ø13 (con blocca filetto), brunate Screws BHCS M6 x 20 H.Ø13 (with thread lock), burnished
8. 0105	Distanziali PP Ø6,5 x 24 H.7 nero Spacers PP Ø6,5 x 24 H.7 black
9. SCL17MED	Schienale interno medio in legno art. 17, 460x600 mm Medium inner wooden backrest art. 17, 460x600 mm
*Accessori/Optional:	
10. GS0118	Slitta sedia, cromata Chromed cantilever
11. BR27DX-SX01	Bracciolo fisso art. 27, destro+sinistro nero Fixed armrest art. 27, right+left, black
12. BR60DX-SXLG	Bracciolo fisso in legno e lama in metallo art. 60, destro+sinistro Fixed wood armrest with metal support art. 60, right+left
13. KIT13008	Kit viti M6 x 36 TBEI, brunate + Chiave esagonale per fissaggio braccioli Screw kit M6 x 36 IHHEC, burnished + Hexagon key for armrest fixing

N.B.: altri braccioli a scelta nel catalogo generale

N.B.: other armrests are available on our general catalogue

